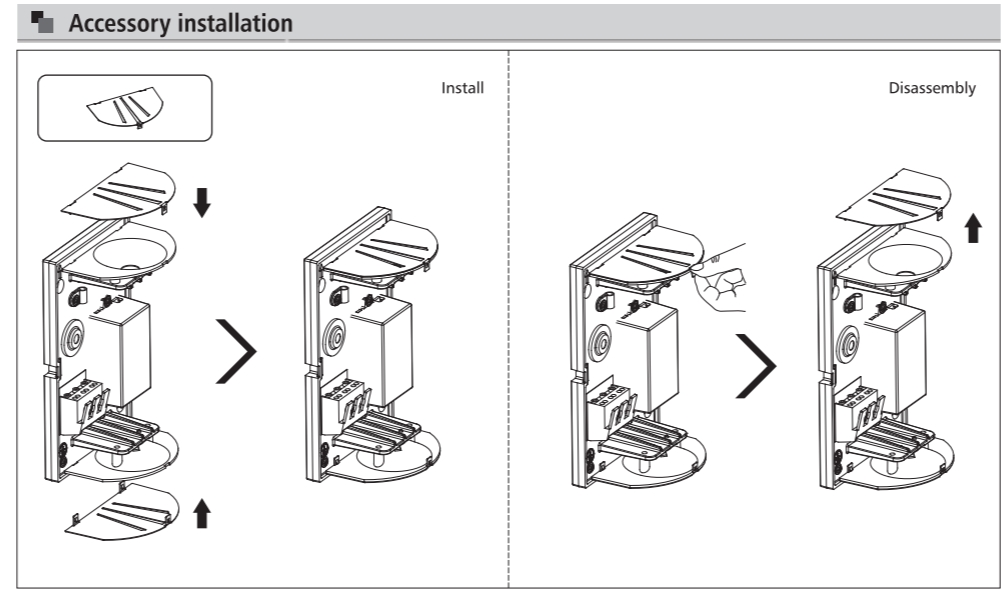
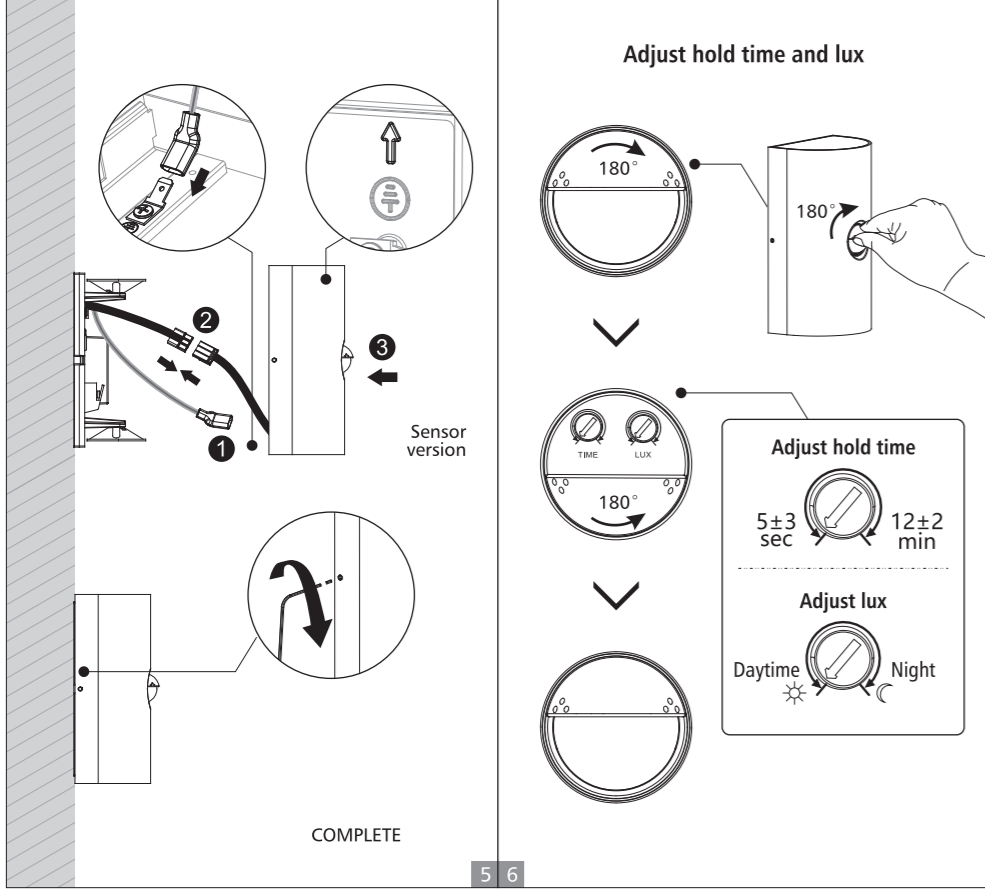
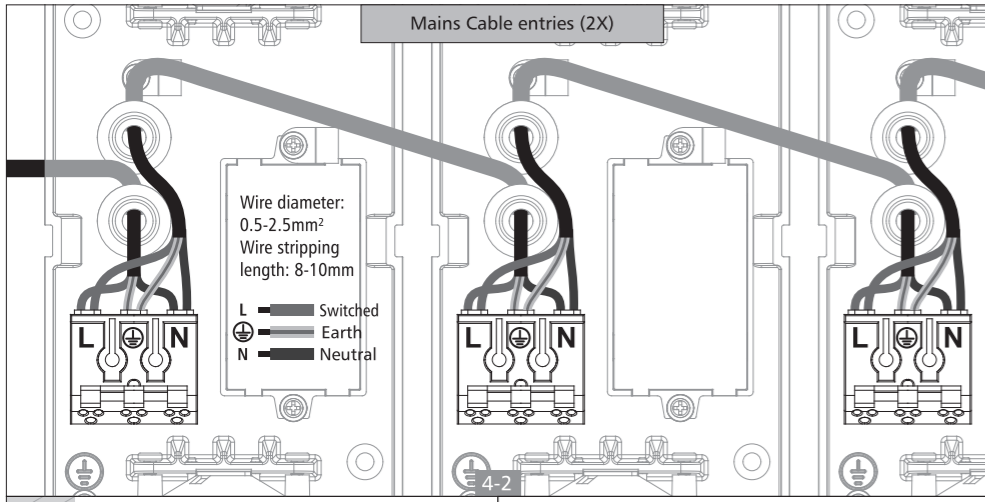
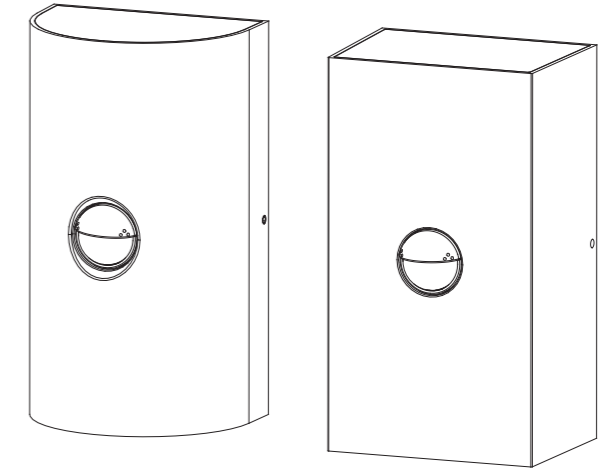
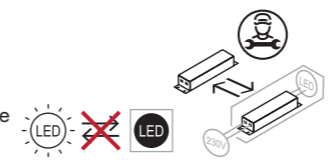


BEDIENUNGSANLEITUNG

S00-51024-165S
Wandleuchte TERRA



Dieses Produkt enthält eine Lichtquelle der Energieeffizienzklasse <E>.



Important Safety Instructions

Basic safety precautions should always be followed when installing, including the following:

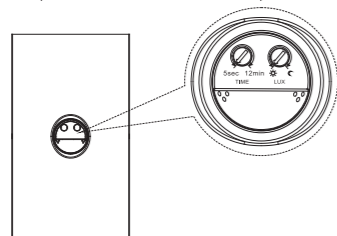
1. Read all instructions.
2. Licensed electrician for installation only
3. Always ensure the power is OFF and the fitting has cooled down before performing any maintenance, cleaning, changing the globe or adjustment to the fitting.
4. Do not install any luminaire near the heat source.
5. Do not exceed the nominal supply voltage or amperage ratings.
6. To avoid injury or damage to the fitting, please ensure that power leads and screws are secure maintenance, cleaning, changing the globe or adjustment to the fitting before connecting the power.
7. When the light source reaches the end of its life, the entire luminaire should be replaced, cannot replace the light source.

Specification

Power Source: 220-240V/AC	Detection Range: 120°
Power Frequency: 50/60Hz	Detection Distance: 2-6m (adjustable)
Ambient Light: <3-1000LUX (adjustable)	Working Temperature: -20~+40°C
Time Delay: Min. 5±3sec	Working Humidity: <93%RH
Max. 12±2min	Power Consumption: approx 0.5W
Rated Load: Max. 50W	Installation Height: 1.5-2.5m
Detection Moving Speed: 0.6-1.5m/s	

Function

1. Time adjustable: The TIME adjustment controls how long the light will stay on after the motion has been detected. Turn the TIME control knob clockwise to increase (up to about 12 minutes) how long the lights stay on or anti-clockwise to decrease (down to about 5 seconds) the time delay



2. Lux adjustment: The lux adjustment controls sensor mode under different setting. Turn the Lux control knob clockwise to ☼, it is daytime mode, the lamp can induct properly at both daytime and night. Turn the Lux control knob anti-clockwise to ☾, it is night mode, the lamp can induct properly only at night.

3. Please adjust the control knob according to the picture 1, if rotate too hard with 360 degree, the knob will be broken or cannot be adjusted normally.

4. Manual mode: When there has no need for induction setting, start manual mode, the lamp will operate without induction function for a long time, once there has induction demand, the lamp should be operated by hand and start automatic mode. Manual mode function as below:

4.1 Only the lamp can be operated properly can manual mode be started.

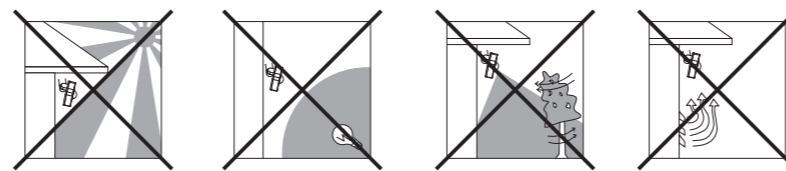
4.2 Enter into manual mode: Turn off the lamp twice (OFF-ON-OFF-ON) within 0.5S~2S when the lamp operate properly, then the lamp will be operated without induction function for 5hours, after 5 hours, the lamp will change into induction mode automatically. If the lamp turns off automatically in 1~2 minutes, then it means failed enter, need try again.

4.4 Exit manual mode: Turn off lamp twice (OFF-ON-OFF-ON) within 0.5S~2S when the lamp operate properly, then the lamp will be operated with induction function.

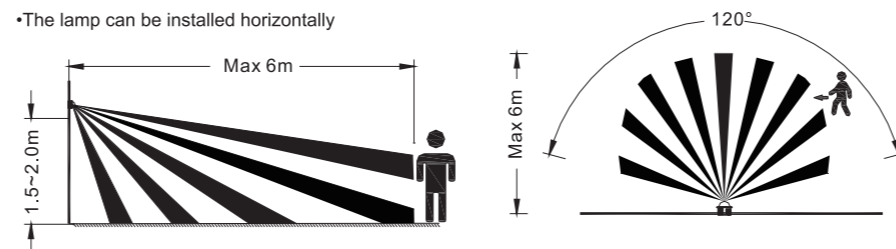
Installation advice

As the detector responds to changes in temperature, avoid the following situations:

- Avoid pointing the detector towards objects with highly reflective surfaces, such as mirrors etc.
- Avoid mounting the detector near heat sources, such as heating vents, air conditioning units, light etc. Avoid pointing the detector towards objects that may move in the wind, such as curtains, tall plants etc.



•The lamp can be installed horizontally



Test

- Connect the power and the lamp, adjust Time control knob into 5 second position, adjust Lux control knob into daytime mode.
- Turn on the power, the lamp will turn off automatically after 35 sec warm-up.
- Within the induction area, if the sensor induct people movement, the lamp will turn on, if people keep motionless, the lamp will turn off automatically, if move again, then the lamp will also trun on again.(To keep a steady working status, the lamp will not working within 3 seconds after turn off, please wait 3 seconds for testing after the lamp turns off)
- Adjust Time and Lux control knob into needed position, then start working.

Installation Procedure

WARNING

1. Switch off before installation.
2. Switch on only after complete installation and examination of the circuit.
3. Professional electrician for installation and maintenance only.



Wall mounted installation

